

LOCAL RULES

(To be read in conjunction with the Rules of Golf and Temporary Rules)

OUT OF BOUNDS: Areas beyond the club boundary fences, the line of white stakes with black tops, and the creek bordering the course.

GROUND UNDER REPAIR: Staked trees, exposed geo-textile in bunkers, temporary ropes or posts, and grass or soil-filled irrigation trenches. Areas defined by white stakes/lines, except in a hazard, and wheel marks or damaged areas made by a mower, tractor, golf cart or motor vehicle. Artificial surfaces, gardens and mulch gardens containing a white stake, the machinery shed and surrounds, and roads and carts paths and the bare shoulders of roads and paths. Relief under Rule - 25-1.

IMMOVABLE OBSTRUCTIONS: All hazard, GUR and tree stakes, fixed sprinkler heads, distance plates/posts, screen fences. Relief under Rule 24-2. If an obstruction on or within two-club lengths of the green on the hole being played intervenes with the line of play between the ball and the hole, the player may obtain relief as follows: If the ball lies off the putting green but not in a hazard and is within two-club lengths of the intervening obstruction, it may be lifted, cleaned and dropped at the nearest point which is not nearer the hole, avoids the obstruction and is not in a hazard or on a putting green.

POWER LINES: If a ball strikes an overhead power line and/or pole located inbounds, the ball **MUST** be replayed without penalty.

HAZARDS: Yellow stakes/lines define water hazards. Red stakes/lines define lateral water hazards.

EMBEDDED BALL: Relief from an embedded ball through the green may be taken under Rule 25-1.

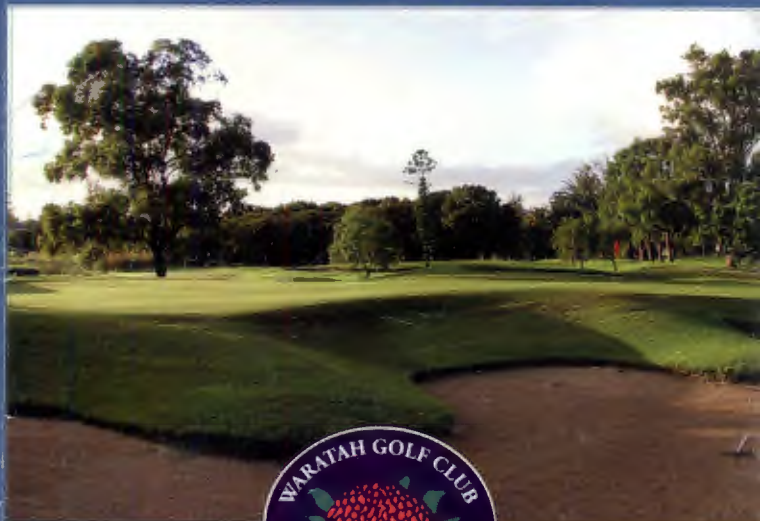
LIGHTNING: If an electrical storm approaches and players are concerned for their safety, play should cease, position of balls marked, and players should take cover until the storm has passed. The "full lightning statement" may be viewed in the clubhouse.

MEASURING DEVICES: May be used to measure distance only.

COLOURED DISTANCE POSTS/MARKERS: are measured to the centre of greens: Blue - 200m, White - 150m, Yellow - 100m, Red - 50m

A.G.U	10	8	16	4	13	2	17	6	15	1	12	5	14	7	18	3	11	9
Match Play Index	1	2	3	4	5	6	7	8	9	10	11	12	13	14	15	16	17	18
W.A.U	12	2	10	6	15	4	13	1	17	6	15	7	15	3	14	3	11	9

WARATAH GOLF CLUB



456 Lake Road, Argenton NSW 2284

PO Box 51 Boolaroo NSW 2284

Phone: (02) 4958 1847 Fax: (02) 4965 8395

Pro Shop (02) 4958 3558

Date	10TH OCTOBER 2017	Number	Daily H'Cap	Scratch	Nett
Player 1	TIM RANKINE				
Partner 2					

Start Time: _____ Finish Time: 1:30, Card No: _____

MEN				PLAYER			HOLE	MARKER			LADIES		
Blue	White	Par	Index	1	2	Result		1	2	Result	Red	Par	Index
373	366	4	3/25	5/2			1				360	4	2
447	440	5	17/29	5/2			2				418	5	8
144	136	3	15/35	3/2			3				130	3	14
415	405	4	1/19	4/3			4				395	5	16
176	168	3	5/31	4/2			5				153	3	11
369	361	4	7/23	4/3			6				345	4	4
293	281	4	13/27	4/2			7				230	4	12
515	501	5	9/21	6/2			8				413	5	9
160	150	3	11/33	4/1			9				110	3	18
2892	2808	35		19	39		OUT				2554	36	
538	528	5	8/22	5/3			10				431	5	7
114	108	3	18/36	4/1			11				108	3	17
450	440	5	16/30	5/2			12				438	5	5
364	352	4	4/20	5/2			13				343	4	1
175	163	3	10/34	3/2			14				145	3	15
222	207	3	2/32	2/4			15				174	3	10
460	446	5	14/26	6/1			16				419	5	6
348	341	4	6/24	5/2			17				321	4	3
342	334	4	12/28	5/1	40		18				270	4	13
3013	2919	36		18	39		IN				2649	36	
2892	2808	35		19	79		OUT				2554	36	
5905	5727	71		37			TOT				5203	72	
72	71		SCR				HCP				74		SCR
131	130		SLOPE				NETT				129		SLOPE

Marker: _____ Player: _____

For your own safety, please adhere to all signage and staff instruction.
Players please note that Recycled Water is in use on the Golf Course for the purpose of irrigation.

FLAGS: Yellow - Front White - Middle Red - Back

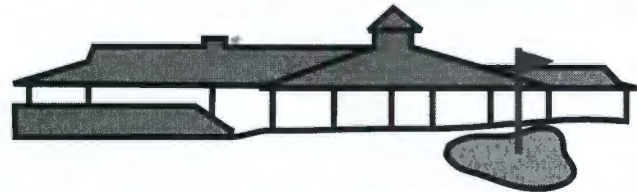
Stroke Play - Two Strokes

- PENALTY FOR BREACH OF LOCAL RULES:** Match Play - Loss of Hole
1. **OUT OF BOUNDS:** Ground outside all boundary fences and WHITE stakes with BLACK TOPS.
 2. **WHEEL TRACKS:** Indentations made by a motorised vehicle or implement throughout the course may be treated as G.U.R. and if so, relief may be taken as per Rule 25-1b.
 3. **HAZARDS:** All creeks, (except for the whole of the creek on the right hand side of the 12th fairway). The whole of the quarry on the 13th hole and areas marked by YELLOW pegs are to be treated as Water Hazards, RED pegs define lateral Water Hazards. Only drains marked by pegs to be treated as hazards. All Pegs & Stakes defining G.U.R. & Hazards are immovable obstructions - Rule 24-2 applies.
 4. **TREES, SHRUBS & GARDENS:** All staked trees or shrubs that interfere with a player's stance or the area of their intended swing, the player MUST take relief as provided in Rule 25-1. All stakes and guards are immovable obstructions. All gardens with bordered surrounds are G.U.R. and relief may be taken as per Rule 25-b(i).
 5. **ACCESS ROADS & PATHWAYS:** Unformed paths & access roads are an integral part of the course, and NO relief can be obtained without penalty. Relief under rule 24-2 may only be obtained from concrete, road base, paved, bordered roads & paths throughout the course.
 6. **IMMOVABLE OBSTRUCTIONS:** All fixed sprinkler heads, water control valves, advertising signs, protective screens, seats, sand drums and machinery shed afford relief to players stance or swing only. *Not line of sight.* Rule 24-2 applies. In addition, if a sprinkler head, either on or within two (2) club lengths of the putting green of the hole being played, intervenes on the line of play between the ball and the hole, providing that the ball is within two (2) club lengths of the sprinkler head and is not in a hazard, relief may be obtained without penalty, by dropping the ball at the nearest point, not nearer the hole, that avoids the intervention.
 7. **G.U.R.** Bare patches on putting greens, Rule 25-1b(iii) applies.
 8. **EMBEDDED BALL:** A ball embedded in its own pitch-mark in the ground in any area through the green may be lifted, cleaned and dropped, without penalty, as near as possible to the spot where it lay but not nearer the hole.

LOCAL RULES AS DISPLAYED ON BOARD

EASTS LEISURE & GOLF
INCORPORATING MAITLAND GOLF CLUB

EASTS LEISURE & GOLF
HUNTER VALLEY



MAITLAND GOLF CLUB

Established 1899

Telephone: (02) 4933 7512 Fax: (02) 4933 5581
Professional Shop: (02) 4933 4141

Medley Card

Player 1: TIM RANKINS Handicap :

Player 2: Handicap :

Golflink No: 10TH OCTOBER 2017

Result	
Gross	
Net	

Mens			Player			Marker			Ladies			
Mtrs	Index	Par	1	2	Result	Hole	1	2	Result	Par	Index	Mtrs
357	8~23	4	5/2			1				4	5	338
418	1~19	4	5/2			2				5	11	415
180	7~33	3	3/3			3				3	9	177
464	13~26	5	5/2			4				5	4	418
143	12~32	3	4/1			5				3	15	139
304	16~31	4	6/0			6				4	13	293
465	11~22	5	5/2			7				5	12	374
308	4~24	4	5/2			8				4	18	199
348	5~28	4	5/2			9				4	6	332
2987		36	16			Out				37		2685

326	9~27	4	5/2			10				4	3	319
169	6~34	3	3/3			11				3	8	156
335	10~25	4	4/2			12				4	7	312
116	15~36	3	3/2			13				3	14	101
464	14~29	5	5/2			14				5	10	400
432	18~30	5	5/2			15				5	17	364
367	2~20	4	5/2			16				4	1	343
146	17~35	3	4/1			17				3	16	134
366	3~21	4	4/3			18				4	2	328
2721		35	19			In				35		2457
2987		36	16			Out				37		2685
5708		71	35			Total				72		5142

H/cap	
Net	



Player: Marker :

See the Golf Factory "fore" all your golfing needs!



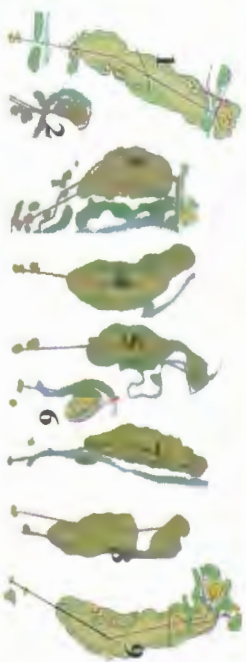
Ellerston Golf
 Ellerston Via Score NSW 2337
 Telephone: (61 2) 6546 5240 Fax: (61 2) 6546 5280
 Email: golf@ellerston.com



Ellerston Golf



Ellerston Golf



Hole Number	1	2	3	4	5	6	7	8	9	OUT
Championship	561	160	448	448	450	164	451	398	579	3659
Back	-	-	447	432	434	-	-	-	-	-
Middle	-	-	-	426	-	-	413	-	-	557
Forward	538	136	421	381	407	159	400	339	524	
Par	5	3	4	4	4	3	4	4	5	36
Player Tim	6/1	2/3	5/2	4/3	5/2	3/2	4/3	4/3	5/2	2/1
Handicap/Match Index	18	13	2	9	5	14	1	4	12	
Marker DMID	6/1	3/3	7/0	5/2	4/3	3/2	5/2	5/2	6/2	17

Players Name _____ Handicap _____
 Local Rules _____



Hole Number	10	11	12	13	14	15	16	17	18	IN	OUT	TOTAL
Championship	549	451	171	449	373	240	456	524	439	3659	3659	7318
Back	-	435	-	-	357	-	-	-	-	-	-	-
Middle	-	405	-	-	344	-	-	-	420	-	-	-
Forward	520	331	-	349	326	206	436	490	418			
Par	5	4	3	4	4	3	4	5	4	36	36	72
Player Tim	6/2	5/1	3/2	4/3	5/1	4/1	5/2	5/2	6/1	15	2/1	36
Handicap/Match Index	7	17	11	6	16	10	3	15	8			
Marker DMID	5/3	4/3	4/2	4/3	4/2	4/2	5/2	5/2	4/3	2/1	17	38

Markers Signature _____ Date 12/00/17
 Players Signature _____

Result



Ellerston Golf
 Ellerston Via Scone NSW 2337
 Telephone: (61 2) 6546 5240 Fax: (61 2) 6546 5280
 Email: golf@ellerston.com



Ellerston Golf

Hole Number	1	2	3	4	5	6	7	8	9	OUT	
Championship	561	160	448	448	450	164	451	398	579	3659	
Back	-	-	447	432	434	-	-	-	-	-	
Middle	-	-	-	426	-	-	413	-	557	-	
Forward	538	136	421	381	407	159	400	339	524	-	
Par	5	3	4	4	4	3	4	4	5	36	
Player	7/11	9	6/1	3/2	5/2	5/2	4/1	5/2	5/2	5/2	16
Handicap/Match Index	18	13	2	9	5	14	1	4	12	-	
Marker	DAVID	13	6/1	4/3	6/1	4/3	3/2	4/3	4/3	5/3	2/1
Players Name											
Local Rules	Handicap										



Ellerston Golf



Result
 TRC 33
 DEF Y2

TRC WND 30PS

	10	11	12	13	14	15	16	17	18	IN	OUT	TOTAL
	549	451	171	449	373	240	456	524	439	3659	7318	
	-	435	-	-	357	-	-	-	-	-	-	
	-	405	-	-	344	-	-	-	420	-	-	
	520	331	-	349	326	206	436	490	418			
	5	4	3	4	4	3	4	5	4	36	72	HCP NET
	6/2	5/1	5/0	5/2	4/2	4/1	4/3	5/2	5/2	17	16	33
	7	17	11	6	16	10	3	15	8			
	5/3	4/2	3/3	4/3	4/2	4/2	5/2	5/2	5/2	21	42	
Markers Signature												
Players Signature												
Date	12 Oct 17											

Thursday Medley
GA White Men

Stableford
GA Red Women

1	2	3	4	Player	Hole No	Hole Name/Sponsor	Sht	Marker		Gross	Nett	SHA	
								1	2				
Men		Ladies											
Idx	Sht	Mtrs	Par	1	2	+0-	1	2	+0-	Idx	Sht	Mtrs	Par
7	336	4	4	5	2					1		336	4
3	354	4	4	5	2					7		308	4
5	506	5	5	5	3					3		437	5
17	301	4	4	4	2					13		315	4
15	201	3	3	4	1	NTP				17		118	3
13	344	4	4	4	2	NTP				9		180	3
1	400	4	4	4	3					11		400	5
11	144	3	3	4	1	NTP				15		117	3
9	520	5	5	5	2					5		471	5
OUT	3106	36		4018						OUT		2582	36

Better by a country mile

"Being put out to pasture is certainly not our idea of retirement, so when we heard about the new Strathearn Villas we decided to have a stickybeak. What we found was delightfully refreshing – a beautiful country village with all the trimmings and none of the worries. Spacious well-appointed homes with clever design to make life easier, and plenty of room for country hospitality. High-speed fibre brings the world to our door with fast Internet access that's a new experience. The emergency call button adds to our peace of mind and a friendly community (who are on our wavelength) will make the up-coming clubhouse a great place to relax and have fun. Retirement living at Strathearn Villas is our kind of country style, and better by a country mile." Call Adam on 0421 721 733 to see for yourself.

Strathearnvillas
Enquiries: call Adam O'Regan
0421 721 733
75 GUNDY ROAD, SCONE

www.strathearn.org.au

mfn RESTORING THE BALANCE
Muswellbrook Forest Nursery
Specialists in Australian Native tubestock and advanced plants.

Ph: 6543 2622
72 Maitland Street
Muswellbrook, New South Wales
www.muswellbrookforestnursery.com.au

MGC
MUSWELLBROOK GOLF CLUB
Bell Street Muswellbrook, NSW, 2333
(02) 6543 1767
www.muswellbrookgolfclub.com.au

LOCAL RULES
(To be read in conjunction with the Rules of Golf & Temporary Local Rules)

- OUT OF BOUNDS** (Rule 27-1) a. Those areas beyond the course boundary fences. b. Beyond any line of white stakes with black tops.
- GROUND UNDER REPAIR** (Rule 25) a. Those areas, the margins of which are defined by white stakes and/or white lines, or by GUR signage. Note: Stakes defining GUR are Immovable Obstructions. b. Except in a hazard clearly defined wheel marks and/or ruts made by a mower, tractor or motor vehicle.
- GROUND UNDER REPAIR - PLAY PROHIBITED** All cultivated garden beds within bounds.
- STAKED TREES & SHRUBS** If a tree or shrub, under 2 clubs in height or staked, interferes with a player's stance or area of intended swing, the ball MUST be lifted without penalty and dropped in accordance with the procedure prescribed in Rule 24-2(1) (Immovable Obstruction). Note: The stakes are Immovable Obstructions.
- WATER HAZARDS** (Rule 26) Water Hazards are defined by yellow stakes and/or lines. Lateral Water Hazards are defined by red stakes and/or lines. Note: The stakes are Immovable Obstructions.
- ROADS AND PATHS** (Rule 24-2) All roads and paths are Immovable Obstructions.
- IMMOVABLE OBSTRUCTIONS CLOSE TO PUTTING GREEN** The Specimen Local Rule in Appendix 1.5 applies (see page 128 of Rules of Golf).
- POWER LINES, POLES AND STAYS** If a ball strikes an overhead power line, pole or attached stay within the boundary of the course, the ball must be replayed without penalty as near as possible from the spot which the original ball was last played in accordance with Rule 20-5.

PENALTY FOR BREACH OF LOCAL RULE Match Play - Loss of hole Stroke Play - Two strokes

Hole	1	2	3	4	5	6	7	8	9	10	11	12	13	14	15	16	17	18
Match	18	8	12	3	14	6	10	1	16	5	11	2	15	7	13	4	17	9
Index																		

XXXX Summer Bright

Hole	10	11	12	13	14	15	16	17	18	128	71	TOTAL	Deduct Daily Handicap	Net Score
Men	503	125	320	358	183	445	324	106	535	2899	3106	6005	\$0.00	
Ladies	430	121	257	258	137	412	328	105	437	2485	2882	5167		
IN										M - Slope - L 125	M - Scratch - L 72			
OUT														
TOTAL	6005	72	79	37										
FEES														
Player Signature														
Home Club														
Marker Signature														
Finish														

05/10/2017 15:33:50